
PARAGON PHYSICIAN

PRESS



Volume 1, Issue 4

September 2013

Web Station for Physician (WSP) Response Team Effective October 1, 2013

The Web Station for Physicians (WSP) Response team is being developed in response to Physician concerns regarding seeking assistance with the electronic medical record (EMR). This team is being implemented to address Physician EMR issues as quickly and efficiently as possible. Three processes have been established to assist in delivering quicker response times.

Call 989-894-3900

Continued on page 5

Order Sets

Many internal workflows have been adjusted to enhance the use of CPOE.

It is our intent to limit obsolescing your favorite order sets. Thus, changes will be made to an inactive version and activated on the 1st of each month. On occasion, order sets may need to be activated immediately for patient safety reasons. We will share the list of order sets we will be obsolescing in this newsletter as well as a brief summary of the changes made.

Conv Order sets have been renamed to enhance the ability to search and filter your request for specific ordersets. Simular conv medication ordersets have been combined

To search for previously named CONV order set:

Search using the actual name of the orderset, (transfusion of blood, wound, Common labs)

or

Search by entering Prot for protocols ordersets (electrolyte replacement, pressure reduction protocol)

or

Search by entering Spec for Speciality ordersets (Internal Med, Pulmonary, Physiatry, Plastic Surgery)

or

Search by entering Resp for Respiratory Ordersets (Ventilator change, Ventilator bundle)

or

Search by entering Proc for procedures Order sets (balloon pump, Cardioversion, Dialysis)

An updated table of content will be created for your ease of use and will be available within the week. Ask a clerk or any nurse if you need help in locating an up to date copy.

Similar CONV order sets that have been combined:

PCN antibiotics will be combined with Antibiotics
Anxiolytics will be combined with Sleepers and bowel care
IV Bolus will be combined with IV solutions
Critical Care drips will be combined with bolus and CC IV drips
Insulin Sliding Scale will be combined with Insulin basal/Bolus

List of Changes to Order Sets

Changes requested

to be activated Oct 1, 2013

PostOp Ortho - updated
PostOp Rotator Cuff - updated
PostOp Total/Fracture knee hip ankle - updated
Conv Common lab - updated
PostOp Thoracotomy - updated
Proc Cardioversion Tee - added procedures
PostOp Cardiac Cath - labs updated
Admit to Telemetry - echo added
Admit to Rehab - updated
Discharge Heart Failure - corrected
ED Bridging - updated, time limited

Medication adjustments

PROC-Hemodialysis
DKA
CONV-Gift of Life
ANES-OB Epidural
Postop - Interventional Radiology Procedures
CONV-Steroid Tapering

New Order Sets

PostOp Facial Fracture
PostOp Breast Procedures
PreOp Breast Procedures
PreOp Plastic Surgery
PreOp EGD/EUS
Discharge Inpatient Core Measures
Proc - Neuromuscular Blocking agents
Spec- Psychiatry

Call 989-894-3900



Action List Sign Off

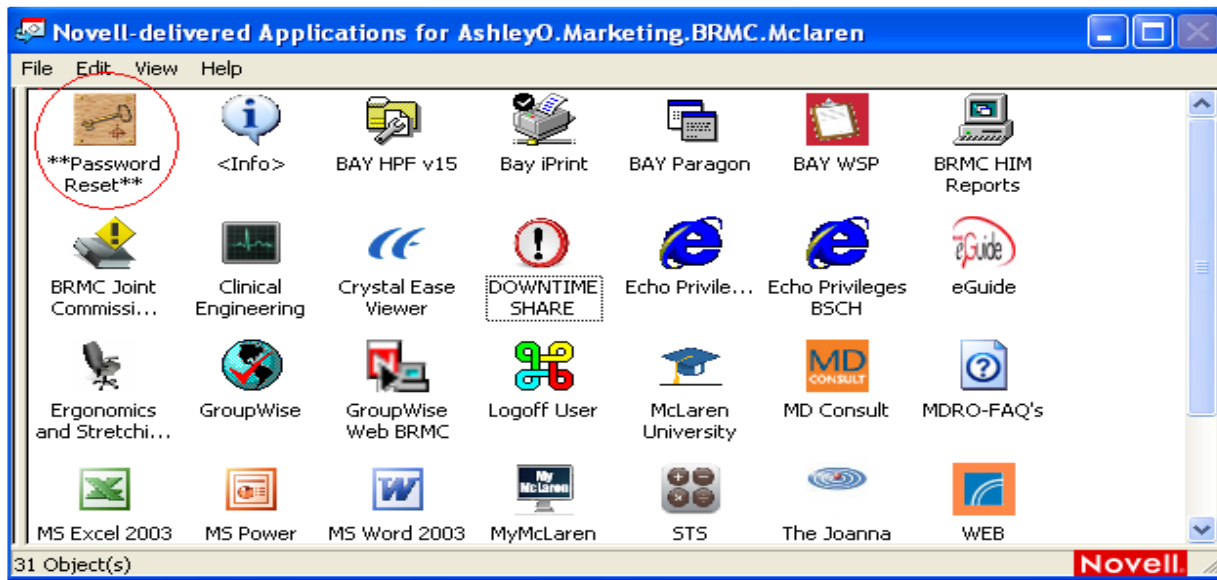
Remember to sign off on your action list items daily. All Verbal/telephone and Protocol orders need to be authenticated within 48 hours.

You can sign off for your group.

If you do not sign off often, your list accumulates and slows the process down.

Please sign off on your action list often but at least daily

New Icon for Password reset for WSP



Clarification of the instruction boxes when editing medications

CPOE, BRITTANY (55700644)

AdmWt: 135.00 LB AdmHt: Ht Wt: 135.00 LB CrCl BSA BMI Bed: Bed 364-1

Prob. & Proc. Pre-arrival Meds Home Meds Adv Dir Demog Implants Newborn Blood Immun

Census Action List CPOE Assignments Orders Results Med Rec View Meds Vitals Clinical Assess Surgery Pat Sched Reports

Order Detail

Description	Dose	UOM	Item Freq
METHYLPREDNISOLONE SOD SUC SOLUTION 40 MG/ML	40	MG	

Route:* IV
Frequency:* Q6H (EVERY 6 HOURS)
PRN:
Start Date:* Next Scheduled Time
Stop Date:
STAT:
Patient's Own Medication:
Dose Limit:
Ordering Physician:* TRAINING, BRMC

Instructions:

→ Nursing instruction or patient related information
Shows up on eMAR

Note to RPh:

→ Only info pharmacy needs to see
Will not show on eMAR

CPOE #: 648256
Read Back:

WSP Response Team
Effective October 1, 2013

In an effort to improve both the efficiency and reduction in response times, we have developed a Web Station for Physicians (WSP) Response Team. We are supplying the contact information for the Anthelio BAY CSA (Melissa Rasschaert) that allows for the physician to contact her directly. This number is available for your use 24/7, therefore bypassing the Service Desk. If she is unable to resolve the issue she will contact the Service Desk and have the issue paged to the appropriate team.

Call 989-894-3900

For immediate assistance to an urgent issue: (access, password WSP navigation issues, as well as CPOE issues)
Response time is within 15 minutes

Call 989-894-3900

For non urgent issues: (order set changes or new order sets, analysis of workflows issues) Response time is expected within 1-2 days

Email www.cpoebay@mclaren.org

Text or call

Ashley Oliver 989-415-4004

Mary Whyte Marshall 989-475-6207

For Physician related application and IT issues (setting up programs, correct settings)

Text (or Call)

Melissa Rasschaert 586-615-0178